

# work<sup>TM</sup>

## ideas

THE LATEST  
IN BATHROOM  
INSPIRATION



robertson  
**design.ideas**<sup>TM</sup>

ROBERTSON**DESIGN**IDEAS.CO.NZ

Cover Feature:  
APASER LOTUS

SUMMER  
EDITION  
2025 / 2026







# outdoor living

Bring comfort and style  
to the outdoors

## 316 Stainless Steel

Made from high-quality grade 316 stainless steel, Due [dù-e] is built to withstand the test of time, offering great resistance to corrosion, whether it's used indoors or outdoors.

Bring comfort and style to your outdoor space with a carefully selected range of outdoor tapware, showers, basins, baths, and kitchen mixers.

Whether you're designing an open-air bathroom, a poolside retreat, an alfresco kitchen or marine living, choosing the right fixtures makes all the difference. With New Zealand's climate in mind, these products are built to handle the elements while adding a touch of elegance to your outdoor living area. From sleek outdoor showers for a refreshing rinse to durable kitchen mixers perfect for entertaining, every piece is designed to blend practicality with beautiful design. Explore the collection and find the perfect outdoor fixtures to complete your space!







## ApaiserMARBLE

A blend of up to 90% reclaimed marble and a high-quality resin, designed for superior performance.

This composite material is more durable and less porous than traditional natural stone marble making it perfect for outdoor use.



apaiser

victoria ⊕ albert®

ELEMENTi®

PARISI

ZUCCHETTI.

NOBILI







## HANSA**ELECTRA**

With over 30 years of experience in electronic faucets, we are proud to present you the updated **HANSAELECTRA**. The new generation is a result of dedicated research and development, to change the way we use and experience water every day.

## NO POWER? **NO PROBLEM!**

**HANSAELECTRA** takes intelligence to the next level. The power module generates electricity from the faucets water usage. No Power supply or battery is required - simple installation and power generation included.



### **FEATURES:**

**Made in Finland**

**Touchless**

**Self-powered**

**Bluetooth®**

**Chrome**

**Mains Pressure**

**WELS 4 Star 6 L/Min**

**PCA® - constant flow rate**  
regardless of pressure variations

**Adjustable flow angle**

**Temperature control handle**

**Adjustable hot water stop**  
(included, retrofittable)

**Mixing valve for manual**  
temperature control

**Nonreturn valve(s)**

**Litter filter(s)**

**Advanced PSD sensor,**

**Light indicated function(s)**

**Smart anti-scalding protection**



**Flexible inlet pipes**

**3S-installation system for**  
safe and simple mounting

**Software settings**  
adjustable via App

**Grease without Silicon**

**Plus X Award**

**10 Year Residential**  
**Guarantee\***

**5 Year Commercial**  
**Guarantee\***

**Lead Free\*\***

**\*\*Complies to the international**  
standard for Lead Free faucets  
(0.25% or less)







## PROJECT FEATURE

**ARCHITECT**  
GEL ARCHITECTS

**BUILDER**  
JW BUILD GROUP

**PHOTOGRAPHER**  
BLADESCENES

# A landmark reimagined



Reimagined by Gel Architects, the historic St James Church has been carefully converted into four distinctive apartments.

Each residence boasts an expansive layout, uniting timeless heritage with contemporary comfort. Many of the church's original features have been thoughtfully retained, creating a seamless dialogue between past and present with its commanding street frontage, the building makes a striking architectural statement.

Completed in 1900, St James Church was designed in the Neoclassical tradition. Positioned at the junction of View Road and Esplanade Road in Mt Eden, it stands as an enduring architectural gem.

The preserved stained-glass windows remain a highlight, casting remarkable views and luminous displays of colour. In one of the apartments, the master suite is framed by a dramatic arched window, where morning light pours through the intricate design.







## FEATURED PRODUCTS

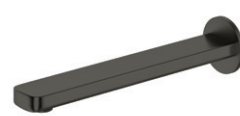


ZUCCHETTI.KOS  
**BRIM EXTENDED HEIGHT  
BASIN MIXER**  
BRUSHED  
METAL BLACK:  
**ZBR382-1250.C51**

VICTORIA + ALBERT  
**BARCELONA 55  
VESSEL BASIN**  
GLOSS WHITE  
QUARRYCAST:  
**51912.10**



ZUCCHETTI.KOS  
**BRIM BATH SPOUT**  
225MM  
BRUSHED  
METAL BLACK:  
**Z92222.C51**



ZUCCHETTI.KOS  
**BRIM SHOWER MIXER**  
BRUSHED  
METAL BLACK:  
**ZBR122-1250.C51**



VICTORIA + ALBERT  
**BARCELONA III FREESTANDING BATH**  
1792 X 865 X 522MM  
GLOSS WHITE QUARRYCAST:  
**52083.10**



ELEMENTI  
**UNO OVERHEIGHT CC  
BTW TOILET SUITE**  
GLOSS WHITE:  
**14761.10**



ELEMENTI  
**NOVARA WALL VANITY  
WITH WHITE ELESTONE TOP**  
1200MM  
SOUTHERN OAK  
TIMBERLAND:  
**87240EWH.85**

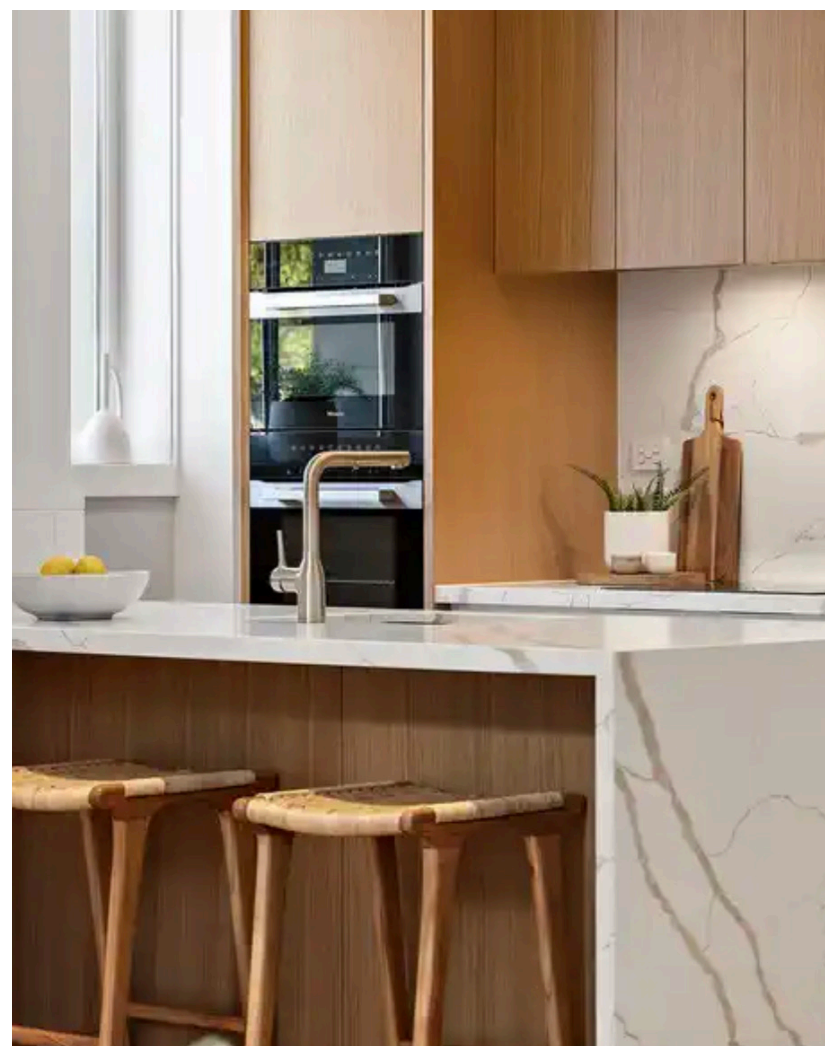
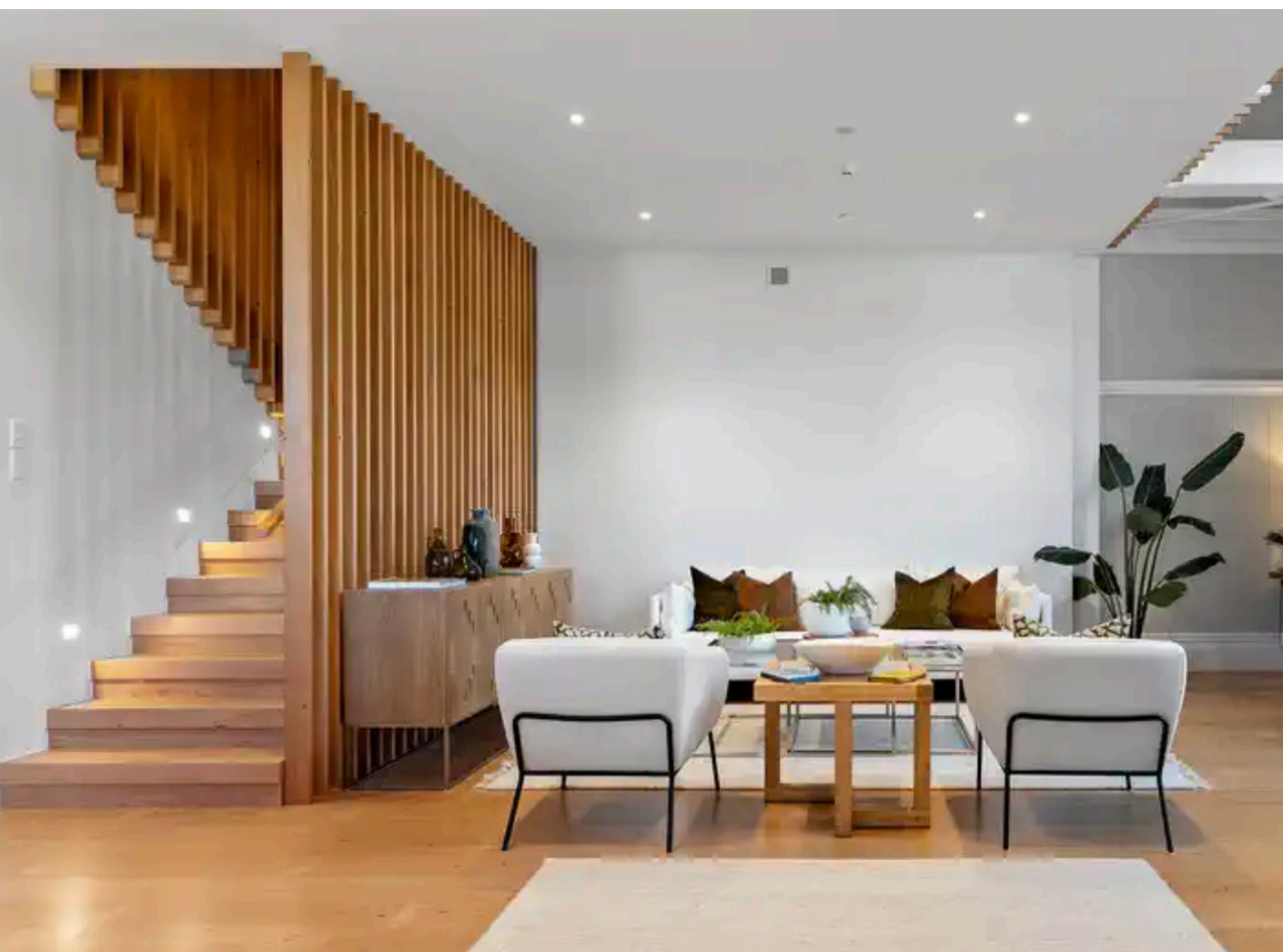


NOBILI  
**MANIA SQUARE KITCHEN MIXER  
WITH PULL OUT SPRAY**  
BRUSHED NICKEL:  
**43836.04**

ELEMENTI  
**SPLASH LUX  
SLIDE SHOWER**  
GUN METAL:  
**40370.29**



ELEMENTI  
**SPLASH LUX  
COLUMN SHOWER**  
GUN METAL:  
**40371.29**





# NEW HEIGHTS! VERTICAL HEATED TOWEL RAILS



Available in 6 finishes, these space-saving designs bring both elegance and practicality to modern interiors. Each rail features optional stylish hooks at the top, perfect for hanging and warming towels with ease. Slim yet powerful, they provide everyday comfort while adding a striking design statement to your bathroom.



# A

SHOWROOMS

## AUCKLAND

### ROBERTSON

25 Vestey Drive, Mt Wellington  
Ph: (09) 573 0490

Open Monday to Friday 8am - 5pm  
Saturday 9am - 2pm  
Closed Sunday

# C

## CHRISTCHURCH

### HOME IDEAS

37 Mandeville Street Riccarton  
Ph: (03) 348 2863

Open Monday to Friday 9am - 4pm  
Saturday 10am - 2pm  
Sunday 10am - 2pm

**Request our latest brochures...**



Our latest IDEAS brochure is packed full of innovative product and great design.

Request your FREE copy now!

**[sales@robertson.co.nz](mailto:sales@robertson.co.nz)**

**robertson**<sup>®</sup>  
BATHWARE  
— SINCE 1987 —

Ph: +64 9 573 0490  
Ph: 0800 433 257  
Email: [sales@robertson.co.nz](mailto:sales@robertson.co.nz)

**ROBERTSON.CO.NZ**